



HUAWEI ME906 Series LTE M.2 Module

Firmware Upgrade Guide

Issue 01
Date 2013-04-24

Huawei Technologies Co., Ltd. provides customers with comprehensive technical support and service. For any assistance, please contact our local office or company headquarters.

Huawei Technologies Co., Ltd.

Huawei Industrial Base, Bantian, Longgang, Shenzhen 518129, People's Republic of China

Tel: +86-755-28780808 Global Hotline: +86-755-28560808 Website: www.huawei.com

E-mail: mobile@huawei.com

Please refer color and shape to product. Huawei reserves the right to make changes or improvements to any of the products without prior notice.

Copyright © Huawei Technologies Co., Ltd. 2013. All rights reserved.

No part of this document may be reproduced or transmitted in any form or by any means without prior written consent of Huawei Technologies Co., Ltd.

The product described in this manual may include copyrighted software of Huawei Technologies Co., Ltd and possible licensors. Customers shall not in any manner reproduce, distribute, modify, decompile, disassemble, decrypt, extract, reverse engineer, lease, assign, or sublicense the said software, unless such restrictions are prohibited by applicable laws or such actions are approved by respective copyright holders under licenses.

Trademarks and Permissions



HUAWEI, HUAWEI, and  are trademarks or registered trademarks of Huawei Technologies Co., Ltd.

Other trademarks, product, service and company names mentioned are the property of their respective owners.

Notice

Some features of the product and its accessories described herein rely on the software installed, capacities and settings of local network, and may not be activated or may be limited by local network operators or network service providers, thus the descriptions herein may not exactly match the product or its accessories you purchase.

Huawei Technologies Co., Ltd reserves the right to change or modify any information or specifications contained in this manual without prior notice or obligation.

NO WARRANTY

THE CONTENTS OF THIS MANUAL ARE PROVIDED "AS IS". EXCEPT AS REQUIRED BY APPLICABLE LAWS, NO WARRANTIES OF ANY KIND, EITHER EXPRESS OR IMPLIED, INCLUDING BUT NOT LIMITED TO, THE IMPLIED WARRANTIES OF MERCHANTABILITY AND FITNESS FOR A PARTICULAR PURPOSE, ARE MADE IN RELATION TO THE ACCURACY, RELIABILITY OR CONTENTS OF THIS MANUAL.

TO THE MAXIMUM EXTENT PERMITTED BY APPLICABLE LAW, IN NO CASE SHALL HUAWEI TECHNOLOGIES CO., LTD BE LIABLE FOR ANY SPECIAL, INCIDENTAL, INDIRECT, OR CONSEQUENTIAL DAMAGES, OR LOST PROFITS, BUSINESS, REVENUE, DATA, GOODWILL OR ANTICIPATED SAVINGS.

Import and Export Regulations

Customers shall comply with all applicable export or import laws and regulations and will obtain all necessary governmental permits and licenses in order to export, re-export or import the product mentioned in this manual including the software and technical data therein.



About This Document

Revision History

Document Version	Date	Chapter	Descriptions
01	2013-04-24		Creation

Scope

ME906V
ME906E
ME906J



Contents

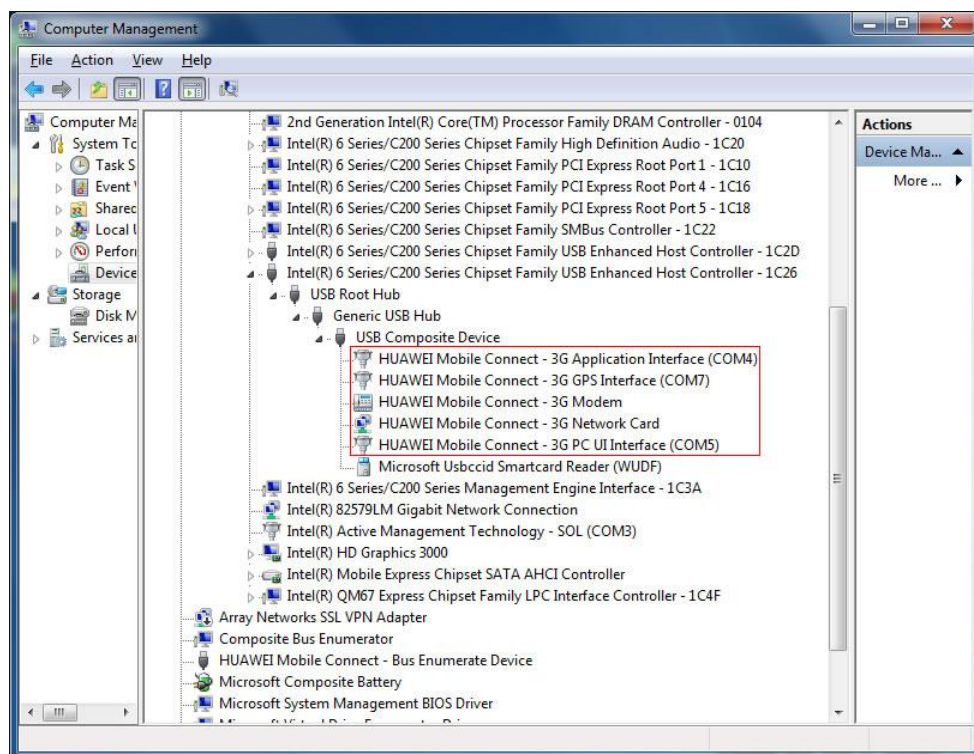
1 One-Click Upgrade for the ME906 on Windows 7	5
1.1 Upgrade Procedures	5
1.2 Simple Verification.....	10
2 One-Click Upgrade for the ME906 on Windows 8	11
2.1 Upgrade Procedures	11
2.2 Simple Verification.....	16

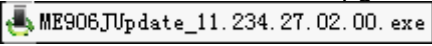
1 One-Click Upgrade for the ME906 on Windows 7

This chapter introduces the upgrade procedures and simple verification of the ME906 series (ME906V, ME906E, ME906J) module on Windows 7. The following sections use the ME906J module as an example.

1.1 Upgrade Procedures

- Step 1 Connect the ME906J module to one of the USB ports on a PC by the adapter board (or the ME906J module embedded in the PC/Laptop). Right-click **My Computer**. Choose **Manage** to access **Computer Management**. The ME906J module's USB ports are displayed as High Speed device in **Device Manager**.



Step 2 Double-click the one-click upgrade tool (.exe), such as  as shown in the following figure.

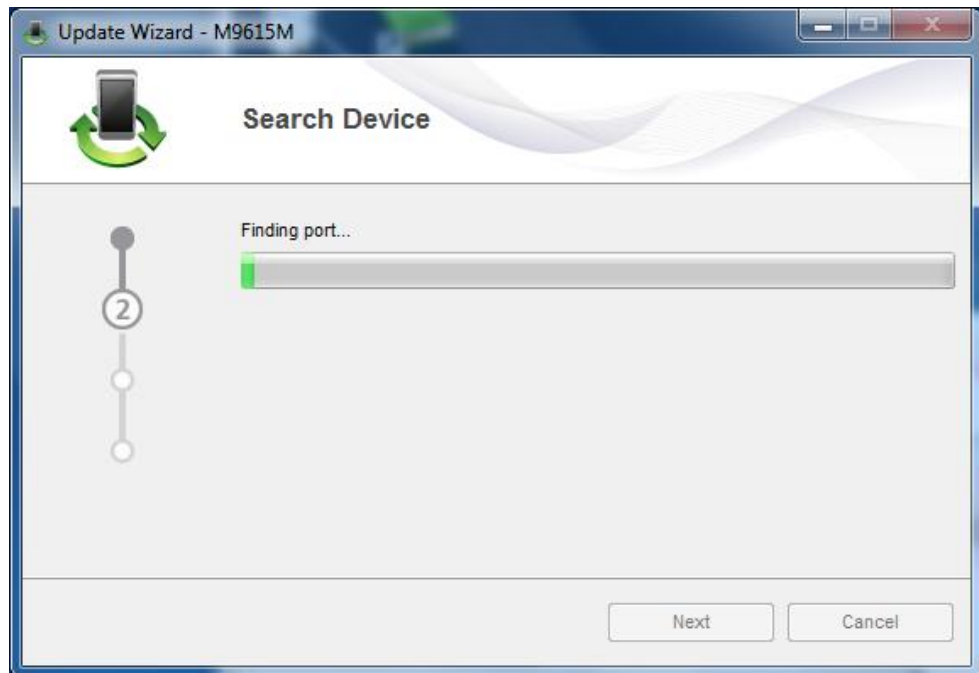


NOTE

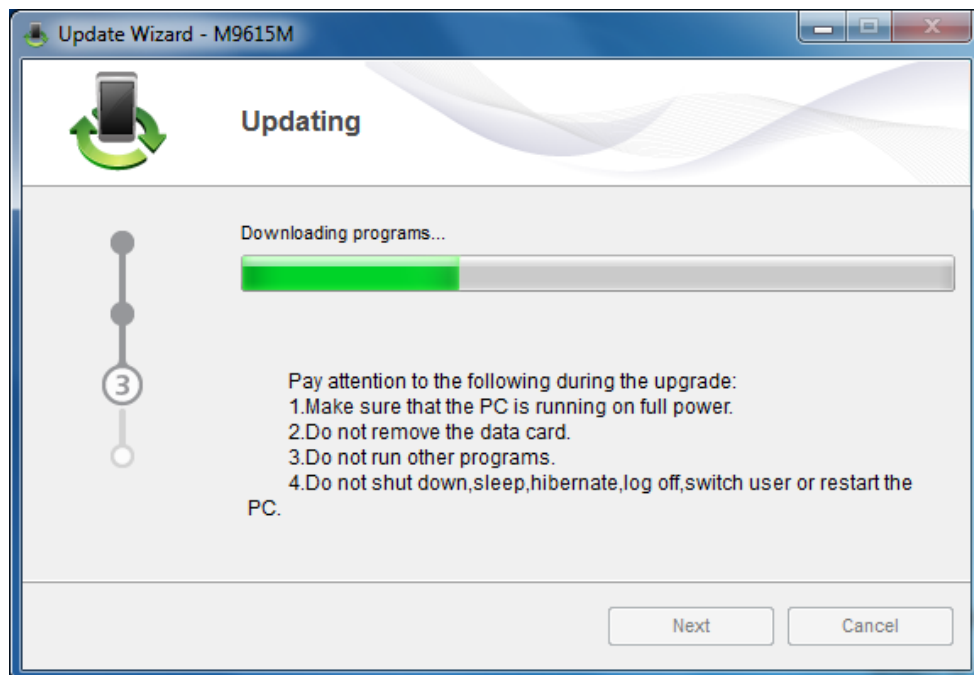
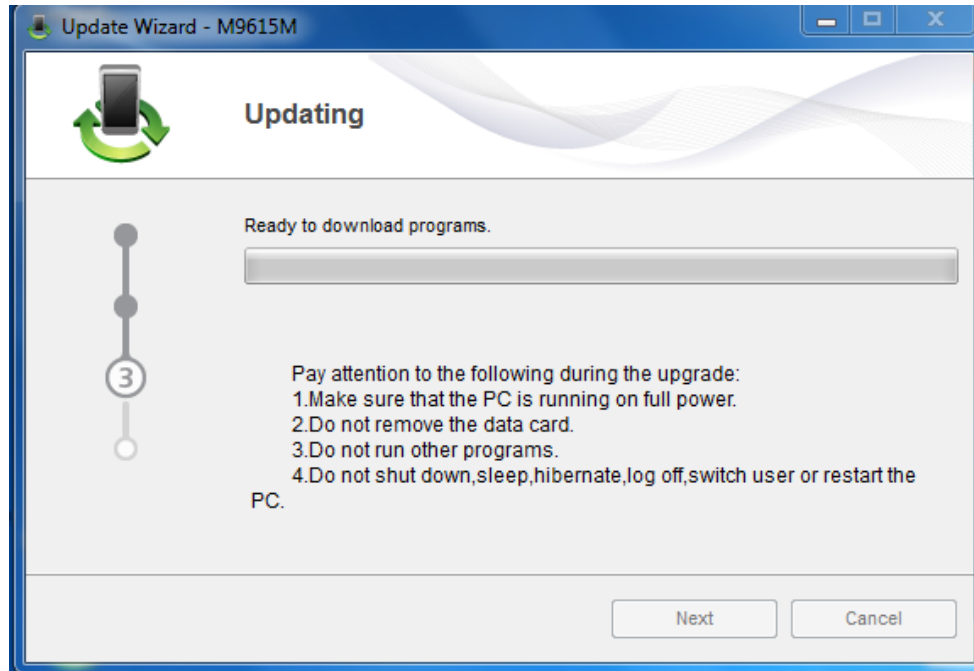
Do not run any applications that occupy the module's ports, such as HyperTerminal.



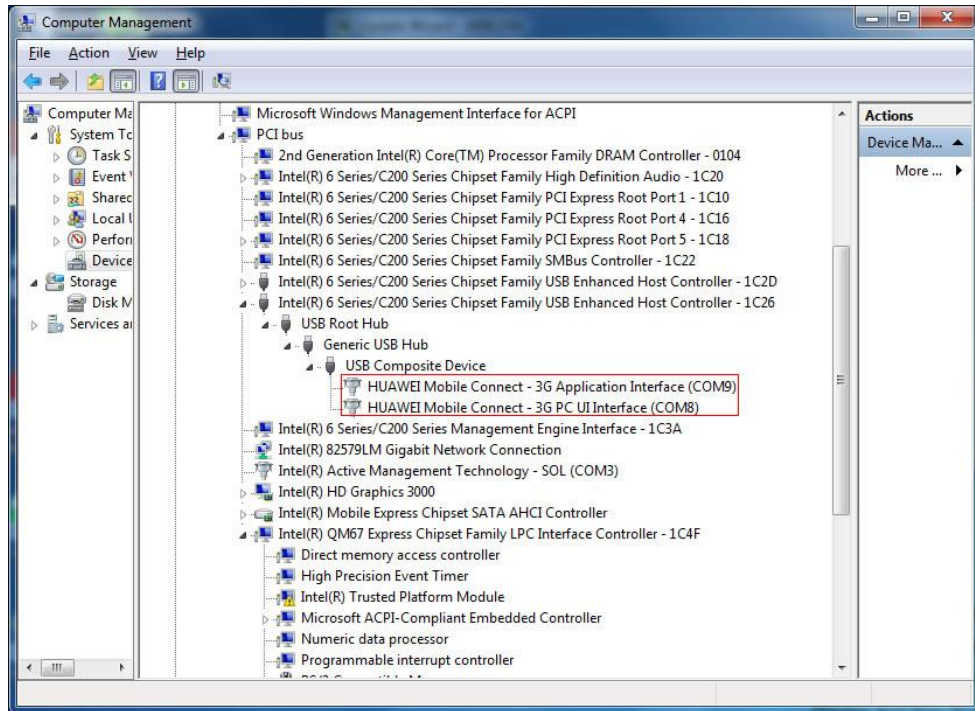
Step 3 Click **Start**. The wizard will search for the module, as shown in the following two figures.



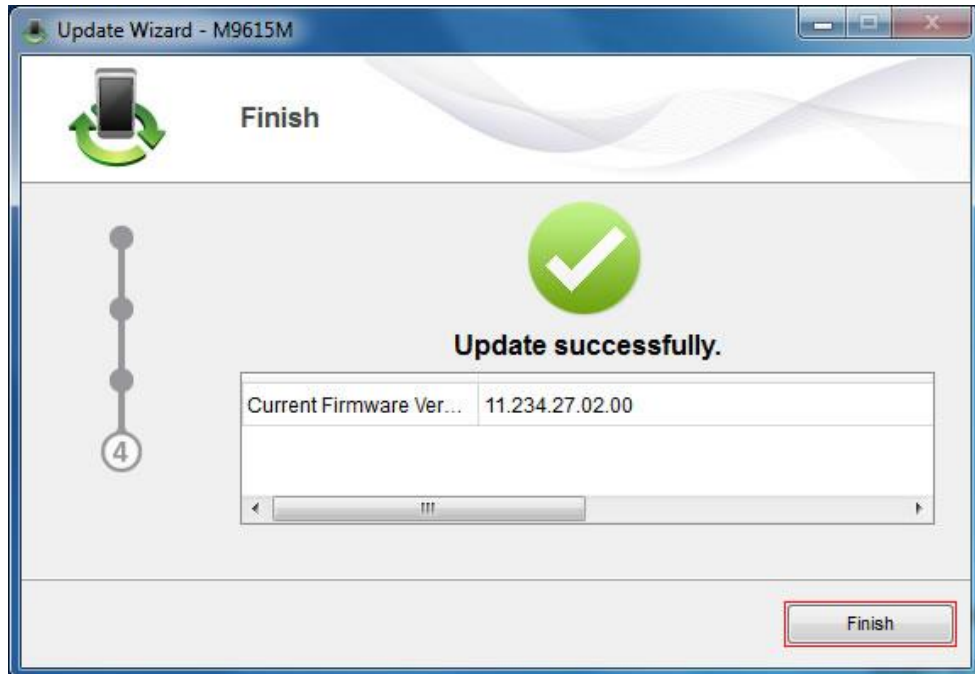
Step 4 After the module is found, the upgrade progress will be displayed as the following two figures.



During the upgrade progress, the ports for the module that can be found in **Device Manager** are **HUAWEI Mobile Connect – 3G Application Interface** and **HUAWEI Mobile Connect – 3G PC UI Interface**, as shown in the following figure.



Step 5 After the upgrade is completed, a dialog box indicating the new firmware version is displayed. Verify if the new version is correct, and click **Finish** to complete the upgrade, as shown in the following figure.





1.2 Simple Verification

To check whether the upgrade is successful after it is completed, you can run the **ATI** command from the serial port tool (the serial port tool should be connected to the PC UI interface of the module) to check the current firmware version of the module. If the firmware version is the same as the version in the Release Notes, it means that the upgrade is successful.

The following is an example:

ATI

Manufacturer: Huawei Technologies Co., Ltd.

Model: ME906J

Revision: 11.234.27.02.00

IMEI: 111111111111110

+GCAP: +CGSM

OK

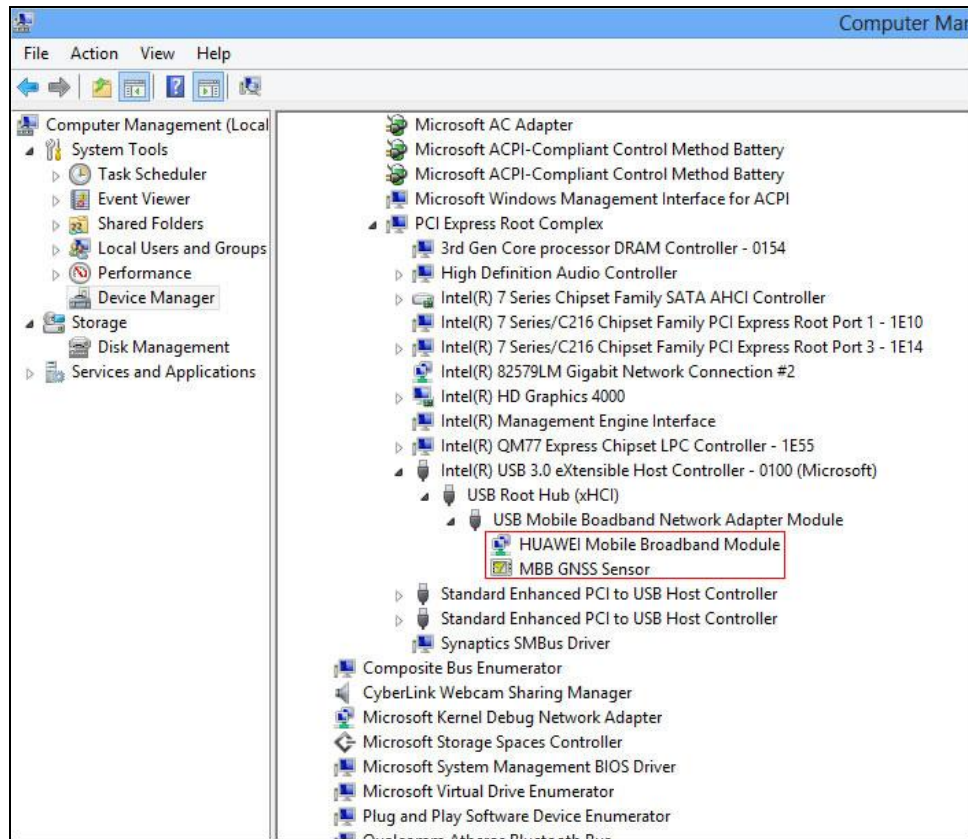


2 One-Click Upgrade for the ME906 on Windows 8


This chapter introduces the upgrade procedures and simple verification of the ME906 series (ME906V, ME906E, ME906J) module on Windows 8. The following sections use the ME906J module as an example.

2.1 Upgrade Procedures

- Step 1 Connect the ME906J module to one of the USB ports on a PC by the adapter board (or the ME906J module embedded in the PC/Laptop). Right-click **My Computer**. Choose **Manage** to access **Computer Management**. The ME906J module's USB ports are displayed as High Speed device in **Device Manager**.



Step 2 Double-click the one-click upgrade tool (.exe), such as

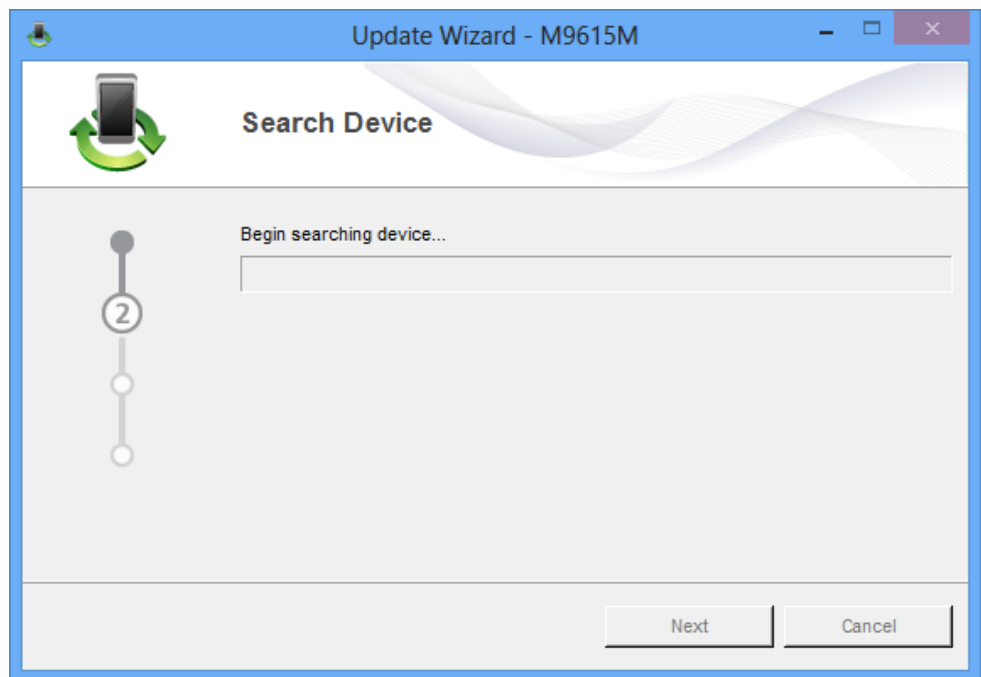
 ME906_TUpdate_11.234.27.02.00.exe, as shown in the following figure.

 **NOTE**

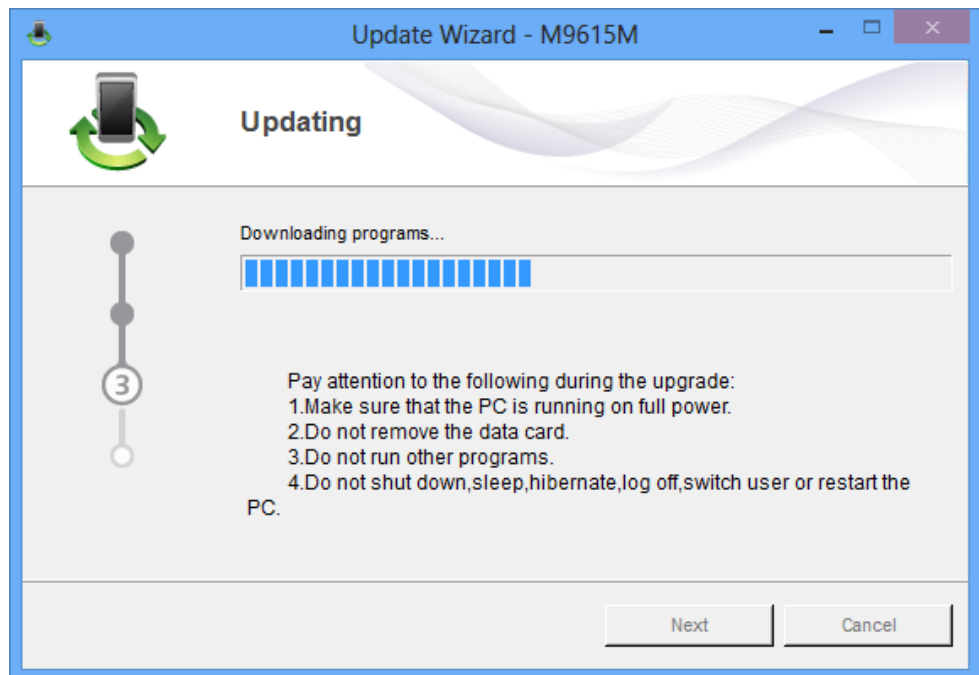
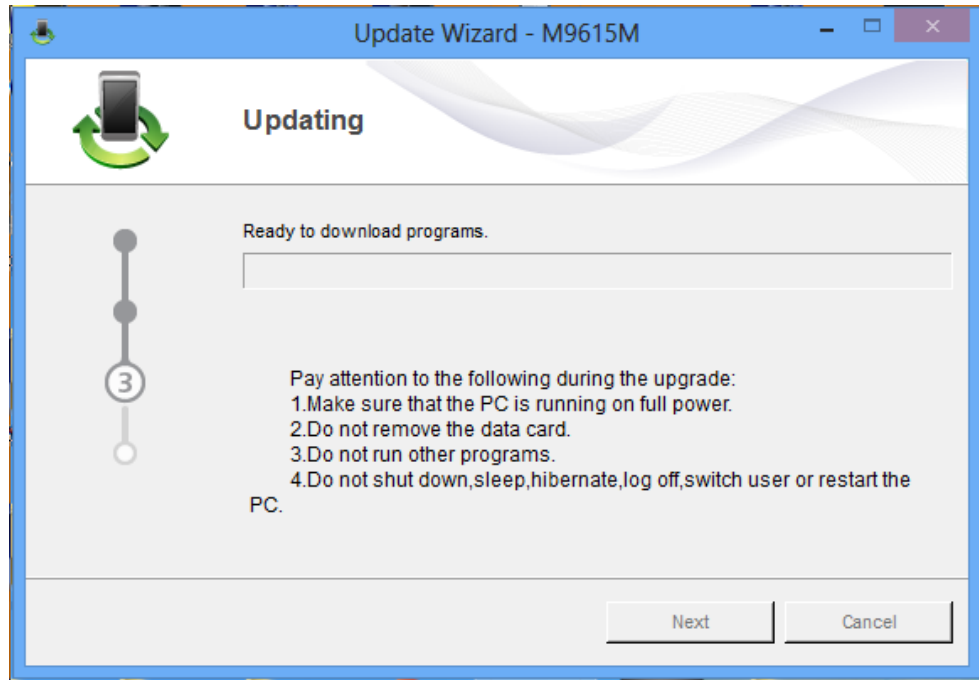
Do not run any applications that occupy the module's ports, such as HyperTerminal.



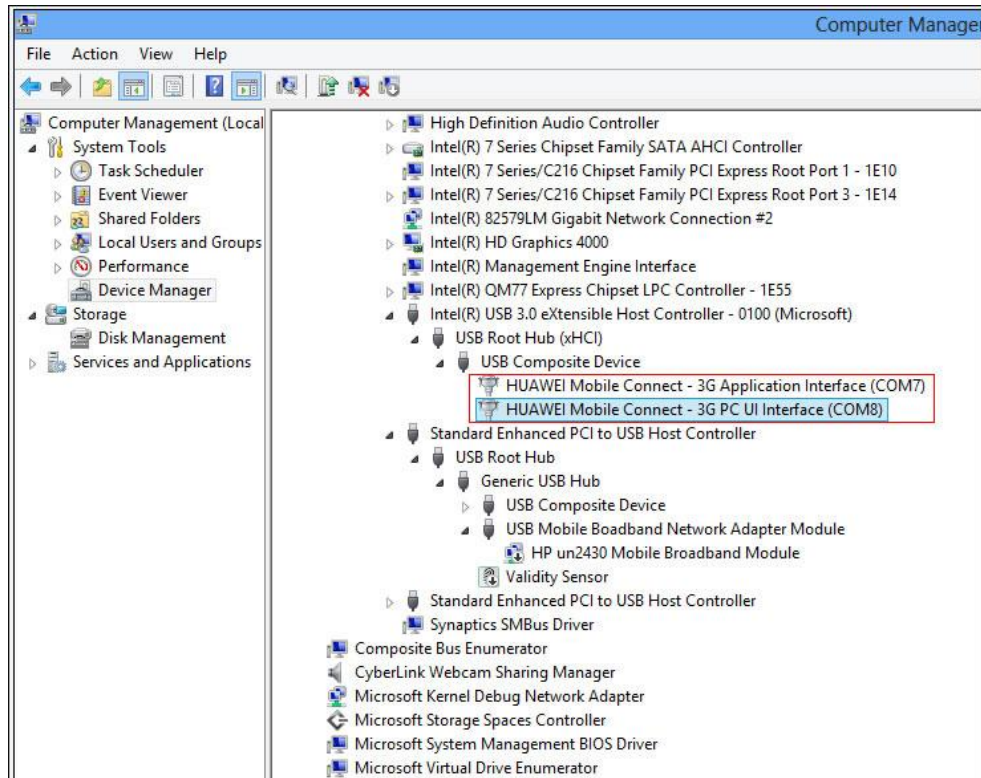
Step 3 Click **Start**. The wizard will search for the module, as shown in the following figure.



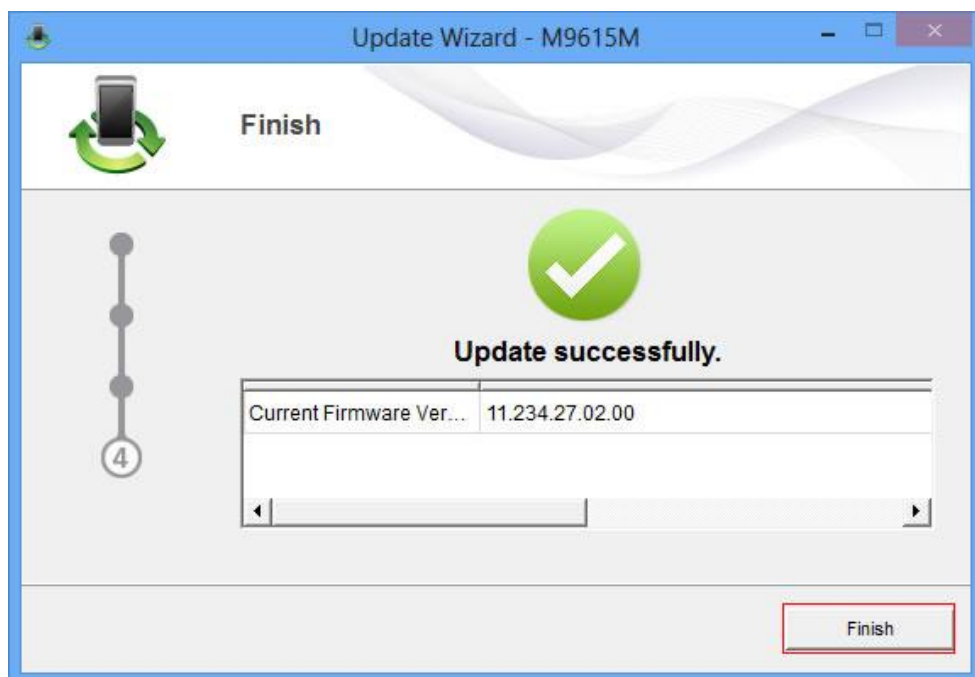
Step 4 After the module is found, the upgrade progress will be displayed as the following two figures.



During the upgrade progress, the ports for the module that can be found in **Device Manager** are **HUAWEI Mobile Connect – 3G Application Interface** and **HUAWEI Mobile Connect – 3G PC UI Interface**, as shown in the following figure.



Step 5 After the upgrade is completed, a dialog box indicating the new firmware version is displayed. Verify if the new firmware version is correct, and click **Finish** to complete the upgrade, as shown in the following figure.



2.2 Simple Verification

To check whether the upgrade is successful after it is completed, you can select **Wireless** in **PC settings**, then click **HUAWEI Technology** to check the current firmware version of the module. If the firmware version is the same as the version in the Release Notes, it means that the upgrade is successful.

HUAWEI Technology hardware info

Manufacturer:	HUAWEI Technology
Model:	HUAWEI Mobile Broadband Module
Firmware:	11.234.27.02.00
Cellular class:	GSM
Data class:	LTE, 1xRTT, 1xEVDO, 1xEVDO-A, 1xEVDO-B
IMEI:	990002440002127
Mobile number:	
SIM ICC ID:	

[Copy](#)