



HUAWEI ME906E LTE M.2 Module

# Acceptance Inspection Guide

Issue 01

Date 2013-05-22

Huawei Technologies Co., Ltd. provides customers with comprehensive technical support and service. For any assistance, please contact our local office or company headquarters.

## Huawei Technologies Co., Ltd.

Huawei Industrial Base, Bantian, Longgang, Shenzhen 518129, People's Republic of China

Tel: +86-755-28780808 Global Hotline: +86-755-28560808 Website: [www.huawei.com](http://www.huawei.com)

E-mail: [mobile@huawei.com](mailto:mobile@huawei.com)

Please refer color and shape to product. Huawei reserves the right to make changes or improvements to any of the products without prior notice.

### **Copyright © Huawei Technologies Co., Ltd. 2013. All rights reserved.**

No part of this document may be reproduced or transmitted in any form or by any means without prior written consent of Huawei Technologies Co., Ltd.

The product described in this manual may include copyrighted software of Huawei Technologies Co., Ltd and possible licensors. Customers shall not in any manner reproduce, distribute, modify, decompile, disassemble, decrypt, extract, reverse engineer, lease, assign, or sublicense the said software, unless such restrictions are prohibited by applicable laws or such actions are approved by respective copyright holders under licenses.

### **Trademarks and Permissions**



HUAWEI, HUAWEI, and are trademarks or registered trademarks of Huawei Technologies Co., Ltd.

Other trademarks, product, service and company names mentioned are the property of their respective owners.

### **Notice**

Some features of the product and its accessories described herein rely on the software installed, capacities and settings of local network, and may not be activated or may be limited by local network operators or network service providers, thus the descriptions herein may not exactly match the product or its accessories you purchase.

Huawei Technologies Co., Ltd reserves the right to change or modify any information or specifications contained in this manual without prior notice or obligation.

### **NO WARRANTY**

THE CONTENTS OF THIS MANUAL ARE PROVIDED "AS IS". EXCEPT AS REQUIRED BY APPLICABLE LAWS, NO WARRANTIES OF ANY KIND, EITHER EXPRESS OR IMPLIED, INCLUDING BUT NOT LIMITED TO, THE IMPLIED WARRANTIES OF MERCHANTABILITY AND FITNESS FOR A PARTICULAR PURPOSE, ARE MADE IN RELATION TO THE ACCURACY, RELIABILITY OR CONTENTS OF THIS MANUAL.

TO THE MAXIMUM EXTENT PERMITTED BY APPLICABLE LAW, IN NO CASE SHALL HUAWEI TECHNOLOGIES CO., LTD BE LIABLE FOR ANY SPECIAL, INCIDENTAL, INDIRECT, OR CONSEQUENTIAL DAMAGES, OR LOST PROFITS, BUSINESS, REVENUE, DATA, GOODWILL OR ANTICIPATED SAVINGS.

### **Import and Export Regulations**

Customers shall comply with all applicable export or import laws and regulations and will obtain all necessary governmental permits and licenses in order to export, re-export or import the product mentioned in this manual including the software and technical data therein.



## About This Document

---

### Revision History

Document Version	Date	Chapter	Description
01	2013-05-22		Creation



# Contents

---

<b>1 Introduction.....</b>	<b>5</b>
1.1 Purpose .....	5
1.2 Scope .....	5
<b>2 Acceptance Inspection.....</b>	<b>6</b>
2.1 Packaging Modes and Appearance .....	6
2.2 Label Inspection .....	8
2.3 Performance Inspection .....	9
2.4 Repack the Module after Inspection.....	12



# 1 Introduction

---

## 1.1 Purpose

This document describes the methods of inspecting Huawei's shipments of ME906E module. Customers can refer to this document when formulating inspection guides for accepting Huawei's ME906E.

## 1.2 Scope

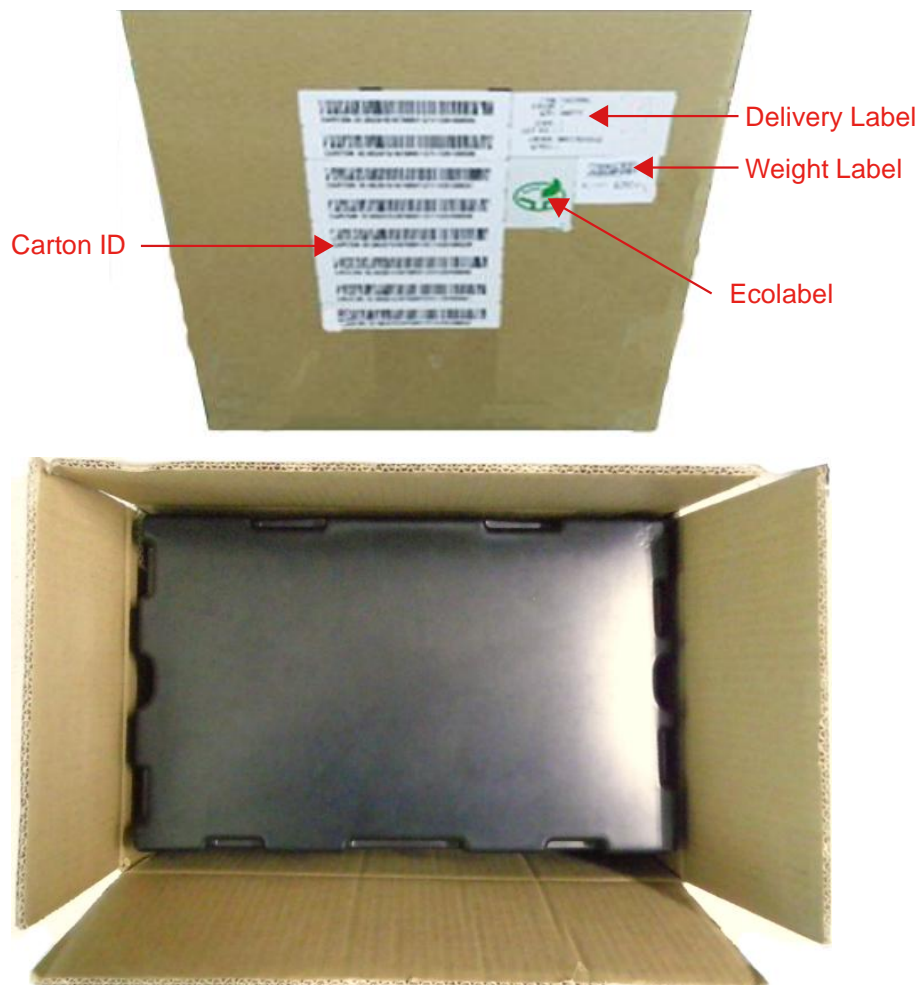
This guide is applicable to the acceptance inspection of Huawei's ME906E. The inspection methods provided in this guide are recommendations, which can be modified by customers if necessary.

# 2 Acceptance Inspection

## 2.1 Packaging Modes and Appearance

The first-layer packages for the ME906E are large cartons, the second-layer packages are trays, as shown in the following figures.

**Figure 2-1** Large carton packaging

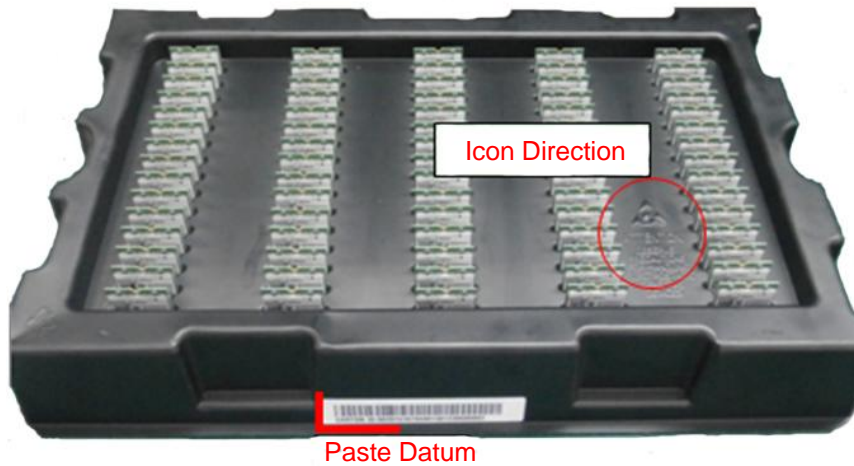




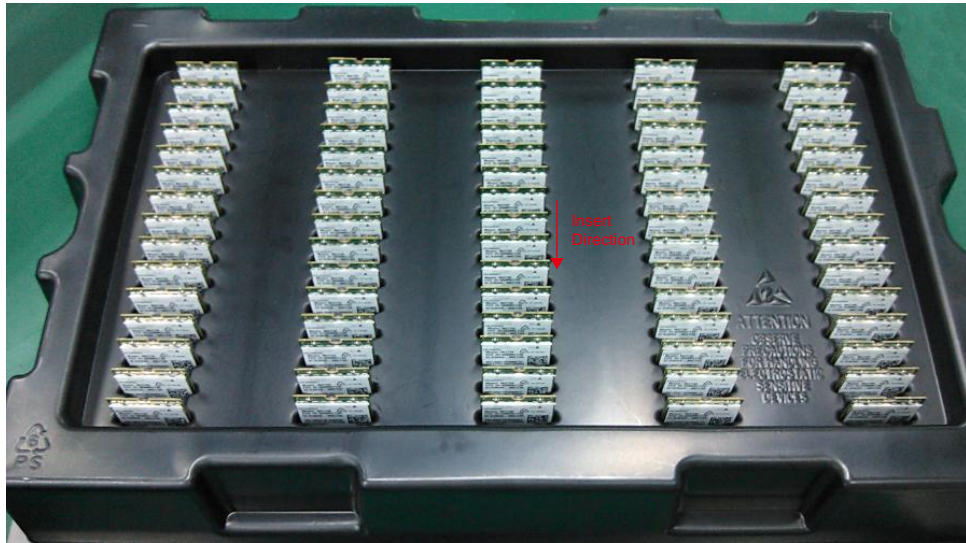
**NOTE**

- Check whether the package has serious damage and has been opened.
- Check whether the number of Carton ID labels attached on the large carton is consistent with the number of trays in the large carton.

**Figure 2-2** The tray



**Figure 2-3** The layout inside the tray



**NOTE**

- Check whether the packaging modes are consistent with those shown in the previous figures.
- The ME906E modules are packed in trays. Check the trays for damage.

## 2.2 Label Inspection

**Figure 2-4** ME906E label





 **NOTE**

- Check whether the information on the label of an ME906E is consistent with the corresponding label shown in Figure 2-4 . There are two kinds of labels for ME906E and you can find one that is corresponding to the label shown in Figure 2-4 . The label shown in Figure 2-4 are of the general version. If the label is customized, see the approval sheet.
- Use a 2D barcode scanner to read the 2D barcode and check whether the number read from the barcode is consistent with the IMEI number printed on the label.

## 2.3 Performance Inspection

Testing software: HyperTerminal

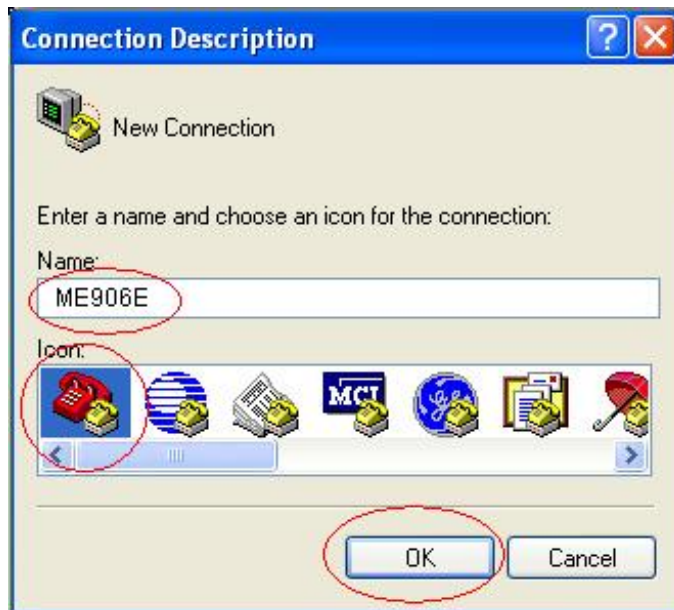
Testing tools: USB cable, PCB for testing modules, PC

The following is the procedure:

- Step 1 Use serial port or the USB cable to connect the testing PCB to the PC.
- Step 2 Open **Run** and input the path **C:\Program Files\Windows NT**, and **hypertrm.exe** will be displayed as shown in the following figure. Double click **hypertrm.exe** to run **HyperTerminal**.



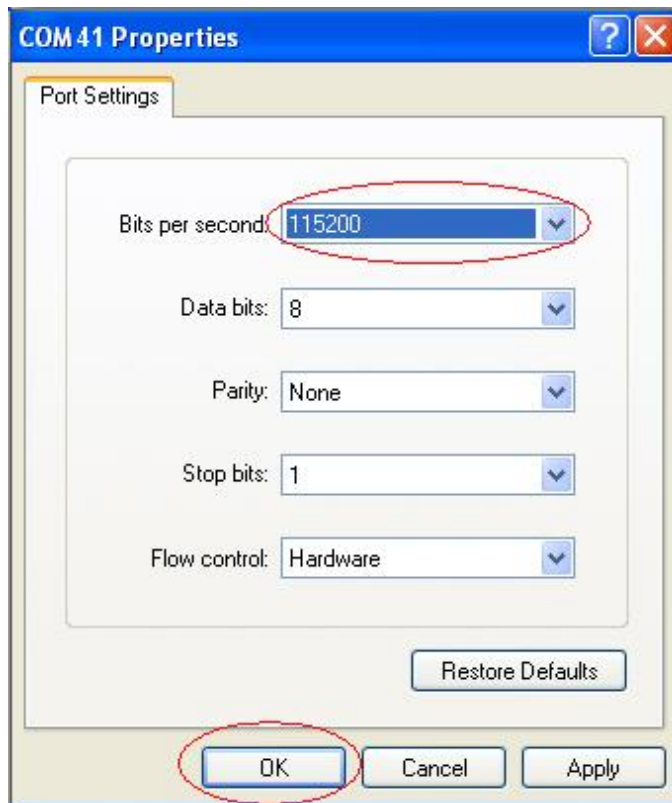
- Step 3 Open **Run** and input **hypertrm** to enter **Connection Description**. Input **ME906E** in **Name** column and select the read telephone icon in **Icon** column as shown in the following figure.



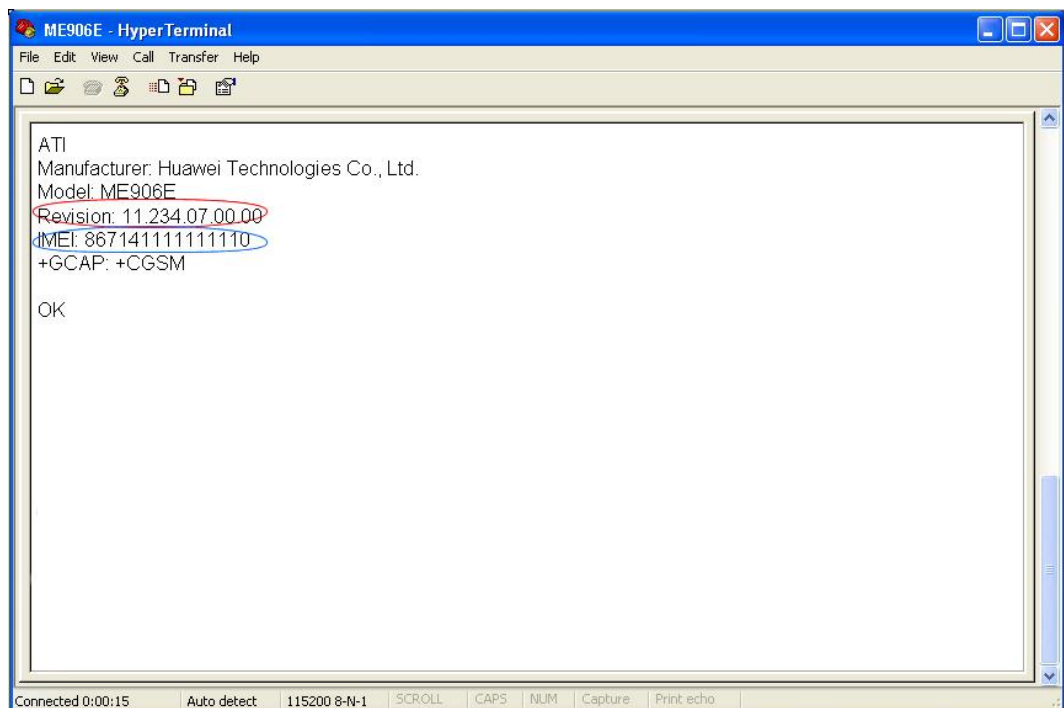
Step 4 Select the correct serial port (such as **COM41**) in **Connect using** column and click **OK** as shown in the following figure.



Step 5 Select **115200** in **Bits per second** column, and then click **Apply** and **OK** as shown in the following figure.



Step 6 Send the command **ATI** and the information will be displayed in the following figure, in which, the issue number is shown in the red circle and the IMEI number is shown in the blue circle.





Manufacture:	the module's manufactory
Model:	module name
Revision:	the module's software version
IMEI:	the module's IMEI

## 2.4 Repack the Module after Inspection

1. Put back the module inside the tray in accordance with the right direction, and then cover the tray lid.
2. Check whether the label information on the trays is consistent with that on the large cartons when putting the trays into the large cartons.