



HUAWEI MU709s-2 HSPA+ LGA Module

Acceptance Inspection Guide

Issue 02

Date 2016-03-30

Copyright © Huawei Technologies Co., Ltd. 2016. All rights reserved.

No part of this manual may be reproduced or transmitted in any form or by any means without prior written consent of Huawei Technologies Co., Ltd. and its affiliates ("Huawei").

The product described in this manual may include copyrighted software of Huawei and possible licensors. Customers shall not in any manner reproduce, distribute, modify, decompile, disassemble, decrypt, extract, reverse engineer, lease, assign, or sublicense the said software, unless such restrictions are prohibited by applicable laws or such actions are approved by respective copyright holders.

Trademarks and Permissions



HUAWEI,

HUAWEI,



are trademarks or registered trademarks of Huawei Technologies Co., Ltd.

Other trademarks, product, service and company names mentioned may be the property of their respective owners.

Notice

Some features of the product and its accessories described herein rely on the software installed, capacities and settings of local network, and therefore may not be activated or may be limited by local network operators or network service providers.

Thus, the descriptions herein may not exactly match the product or its accessories which you purchase.

Huawei reserves the right to change or modify any information or specifications contained in this manual without prior notice and without any liability.

DISCLAIMER

ALL CONTENTS OF THIS MANUAL ARE PROVIDED "AS IS". EXCEPT AS REQUIRED BY APPLICABLE LAWS, NO WARRANTIES OF ANY KIND, EITHER EXPRESS OR IMPLIED, INCLUDING BUT NOT LIMITED TO, THE IMPLIED WARRANTIES OF MERCHANTABILITY AND FITNESS FOR A PARTICULAR PURPOSE, ARE MADE IN RELATION TO THE ACCURACY, RELIABILITY OR CONTENTS OF THIS MANUAL.

TO THE MAXIMUM EXTENT PERMITTED BY APPLICABLE LAW, IN NO EVENT SHALL HUAWEI BE LIABLE FOR ANY SPECIAL, INCIDENTAL, INDIRECT, OR CONSEQUENTIAL DAMAGES, OR LOSS OF PROFITS, BUSINESS, REVENUE, DATA, GOODWILL SAVINGS OR ANTICIPATED SAVINGS REGARDLESS OF WHETHER SUCH LOSSES ARE FORSEEABLE OR NOT.

THE MAXIMUM LIABILITY (THIS LIMITATION SHALL NOT APPLY TO LIABILITY FOR PERSONAL INJURY TO THE EXTENT APPLICABLE LAW PROHIBITS SUCH A LIMITATION) OF HUAWEI ARISING FROM THE USE OF THE PRODUCT DESCRIBED IN THIS MANUAL SHALL BE LIMITED TO THE AMOUNT PAID BY CUSTOMERS FOR THE PURCHASE OF THIS PRODUCT.

Import and Export Regulations

Customers shall comply with all applicable export or import laws and regulations and be responsible to obtain all necessary governmental permits and licenses in order to export, re-export or import the product mentioned in this manual including the software and technical data therein.

Privacy Policy

To better understand how we protect your personal information, please see the privacy policy at <http://consumer.huawei.com/privacy-policy>.



About This Document

Revision History

| Document Version | Date | Chapter | Description |
|------------------|------------|---------|---|
| 01 | 2014-07-15 | | Creation |
| 02 | 2016-03-30 | 2.1 | Updated Figure 2-1 Large carton packaging. |
| | | 2.3 | Added the step 6 Check the PC UI port number. |



Contents

| | |
|---|----------|
| 1 Introduction..... | 5 |
| 1.1 Purpose | 5 |
| 1.2 Scope | 5 |
| 2 Acceptance Inspection..... | 6 |
| 2.1 Packaging Modes and Appearance | 6 |
| 2.2 Label Inspection | 8 |
| 2.3 Performance Inspection | 9 |
| 2.4 Repack the Module after Inspection..... | 13 |



1 Introduction

1.1 Purpose

This document describes the methods of inspecting Huawei's shipments of MU709s-2 module. Customers can refer to this document when formulating inspection guides for accepting Huawei MU709s-2 module.

1.2 Scope

This guide is applicable to the acceptance inspection of Huawei MU709s-2 module. The inspection methods provided in this guide are recommendations, which can be modified by customers if necessary.

2 Acceptance Inspection

2.1 Packaging Modes and Appearance

The first-layer packages for the MU709s-2 module are large cartons; the second-layer packages are medium cartons, and the third-layer packages are vacuum bags, as shown in the following figures.

Figure 2-1 Large carton packaging



 **NOTE**

- Check whether the package has serious damage or has been opened.
- Check whether the number of Carton ID labels attached on the large carton is consistent with the number of medium cartons in the large carton.

Figure 2-2 Medium carton



Figure 2-3 Vacuum bag inside a medium carton



 **NOTE**

- Check whether the packaging modes are consistent with those shown in the previous figures.
- The MU709s-2 modules are packed in vacuum bags. Check the vacuum bags for damage and leakage.

Figure 2-4 Arrangement of the modules (after the vacuum bag is removed)

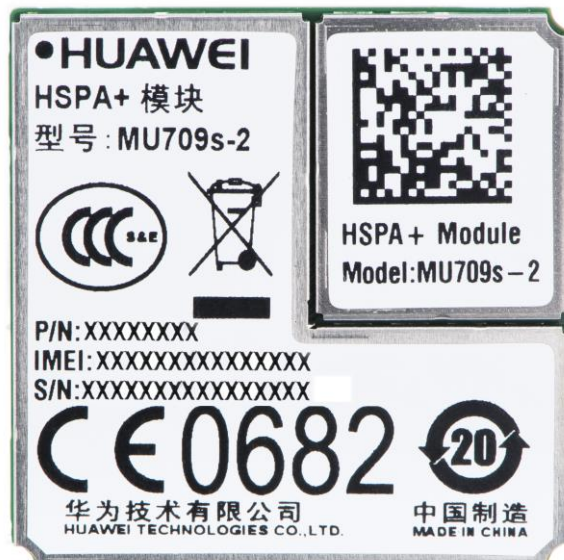


 **NOTE**

- Check that the arrangement of modules is consistent with that shown in Figure 2-4 .
- Check that the number of modules is consistent with that labeled on the large carton.
- After the vacuum bag is removed for inspection, repack the modules in a vacuum bag to ensure the quality when the modules deliver to the customer.

2.2 Label Inspection

Figure 2-5 MU709s-2 label



 **NOTE**

- Check whether the information on the label of an MU709s-2 module is consistent with the label shown in Figure 2-5 .
- Use a 2D barcode scanner to read the 2D barcode and check whether the number read from the barcode is consistent with the IMEI number printed on the label.
- It is recommended to take ESD protection during the inspection, for example, wearing ESD wrist straps, ESD gloves, or ESD finger cots.

2.3 Performance Inspection

Testing software: HyperTerminal

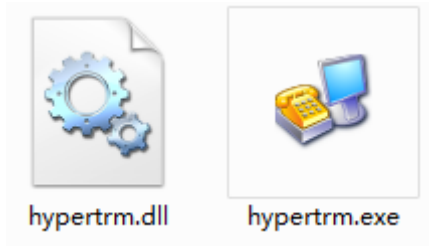
Testing tools: Serial port or USB cable, development kit, and PC

Testing system: Windows 7

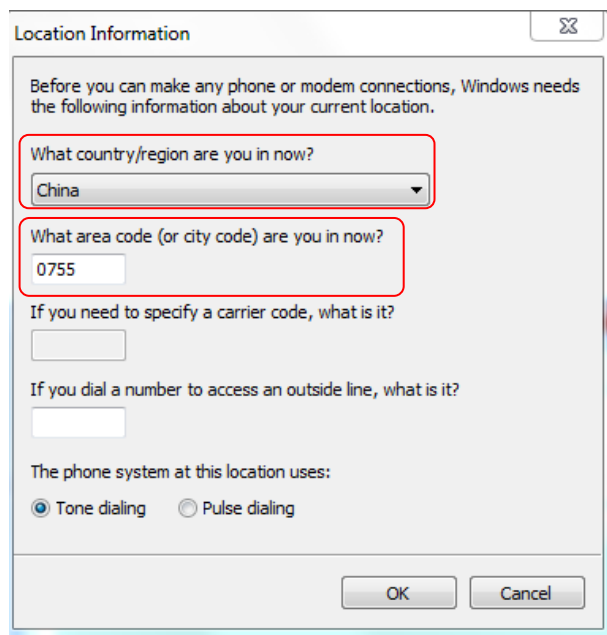
The following is the procedure:

- Step 1 Use serial port or the USB cable to connect the development kit to the PC.

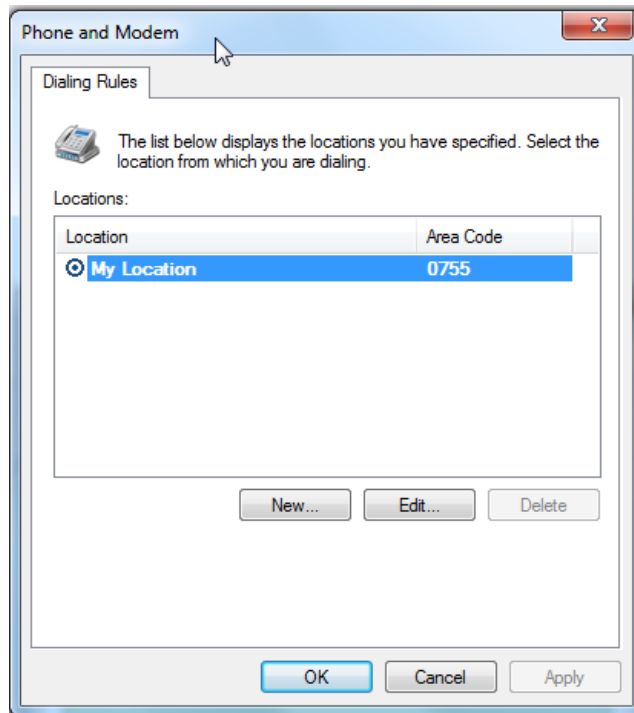
Step 2 You can download **hyperterm.exe** and **hyperterm.dll** from the internet and store **hyperterm.exe** and **hyperterm.dll** in **C:\windows\system32**.



Step 3 Run **hyperterm.exe** in **C:\windows\system32** to enter **Location Information**. Select your country or region (here take **China** as an example), input your code or city code (here take **0755** as an example), and then click **OK**.



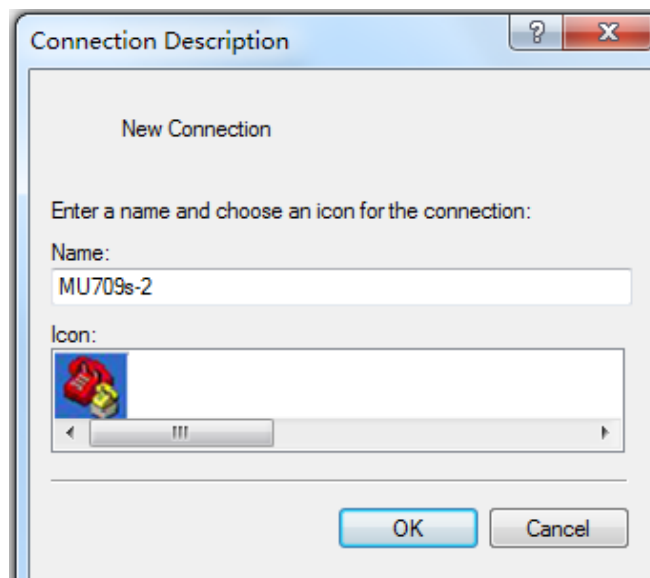
Step 4 Enter **Phone and Modem**, and click **OK**.



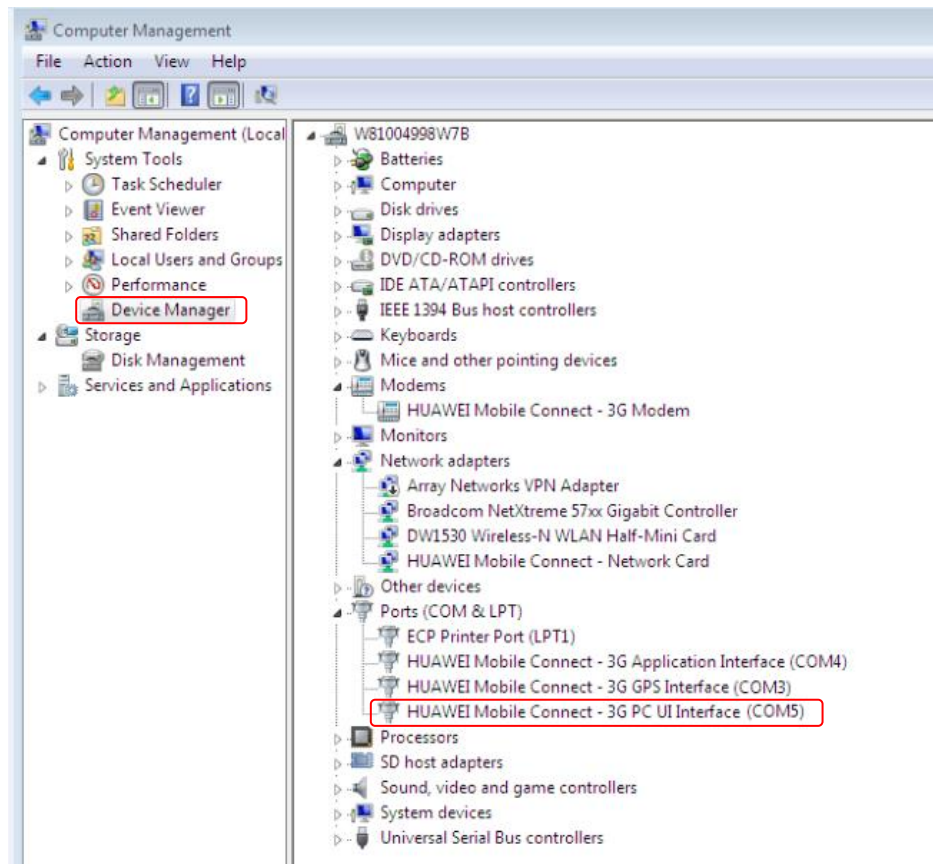
 **NOTE**

Step 3 and Step 4 are only used for users to install **hypertrm.exe** for the first time. If **hypertrm.exe** has been installed before, it will directly go to Step 5.

Step 5 Enter **Connection Description**. Input **MU709s-2** in **Name** column, select the red telephone icon in **Icon** column and click **OK**.



- Step 6 Check the PC UI port number. Right click **Computer**, select **Manage**, and enter **Computer Management**. In **Device Manager** page, select **Ports(COM & LPT)**, and then the PC UI port number is shown (here take **COM5** as an example).



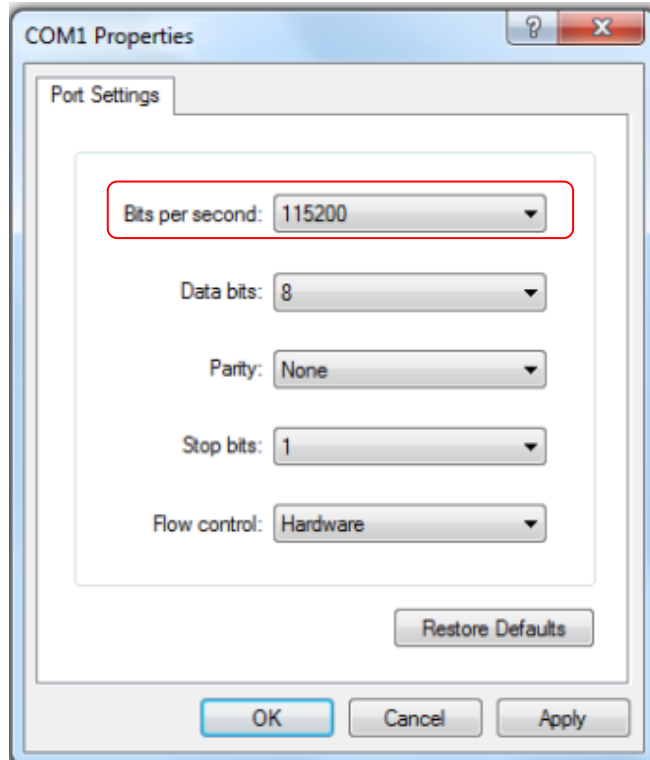
- Step 7 Select the correct serial port in **Connect using** column and click **OK**.



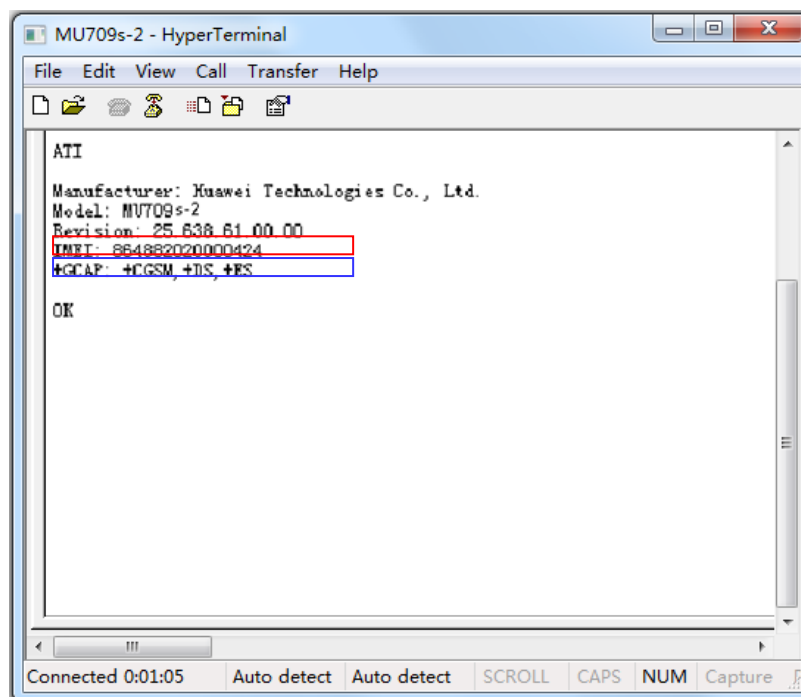
 **NOTE**

The serial port shown in the figure is provided only for your reference. The actual serial port may be different.

Step 8 Select **115200** in **Bits per second** column, and then click **Apply** and **OK**.



Step 9 Send the command **ATI** and the information will be displayed in the following figure.



| | |
|--------------|-------------------------------|
| Manufacture: | The module's manufactory |
| Model: | The module's name |
| Revision: | The module's software version |
| IMEI: | The module's IMEI |



NOTE

The firmware version and the IMEI number shown in the figure are provided only for your reference. The actual product may be different.

2.4 Repack the Module after Inspection

1. After the vacuum bag is removed for inspection, repack the modules in a vacuum bag.
2. Check whether the order on the medium carton is consistent with that on the large carton when putting the module into the medium carton.